

MEETING NOTES

**SOUTH CAROLINA ELECTRIC & GAS COMPANY
Fisheries TWC Meeting**

May 23, 2016

Final ACJ 07-29-16

ATTENDEES:

Bill Argentieri (SCE&G)
Scott Collins (SCE&G)
Tommy Boozer (SCE&G)
Ray Ammarell (SCE&G)
Brandon Stutts (SCANA)
Caleb Gaston (SCANA)
Henry Mealing (Kleinschmidt)

Bill Marshall (SCDNR)
Dick Christie (SCDNR)
Robert Stroud (SCDNR)
Ron Ahle (SCDNR)
Alex Pellett (SCDNR)
Jordan Johnson (Kleinschmidt)

These notes serve as a summary of the major points presented during the meeting and are not intended to be a transcript or analysis of the meeting.

The group met at the SCE&G “99” Boat Ramp to perform a review of potential sites on Monticello Reservoir for habitat enhancement. Based on previous meetings, the group reviewed each site for spawning enhancement – nursery/juvenile enhancements – and adult fish deep water enhancements. The group also discussed the use of felling trees into the lake and cabling them to the shoreline. This type of enhancement would create a variety of fish habitat along the shoreline areas. SCDNR noted that this was a good enhancement but would likely need to be repeated during the license as the wood would deteriorate. The group also noted that hardwoods would be better for this type of enhancement than using pines.

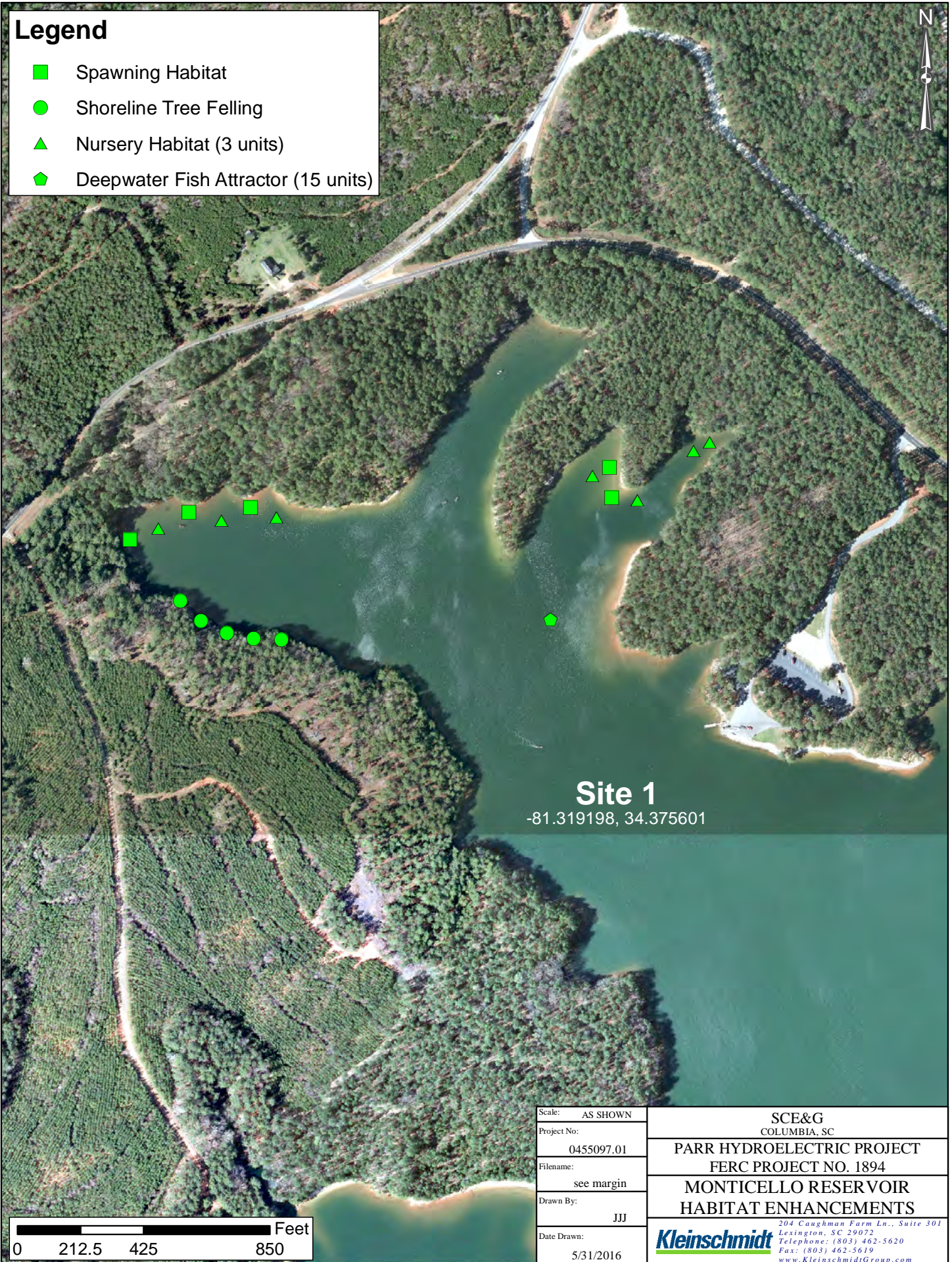
The group reviewed 13 areas and made notes on the potential for each of the four enhancements at each area. Kleinschmidt has prepared updated project maps to depict each site, the general type and number of enhancement, and the general location of each type of habitat enhancement. See attached PDF file. The maps also indicate the number of enhancements for deep water (15 structures) and nursery (3 structures) at each site. The number of spawning and felled trees is not specified at this point.

ACTION ITEMS:

- Kleinschmidt will finalize the habitat enhancement maps based on TWC input.
- Kleinschmidt will summarize the cost for placement of proposed habitat enhancements in Monticello Reservoir.
- SCE&G Management will review this information and develop a potential enhancement measure for the TWC to review and discuss.

Legend

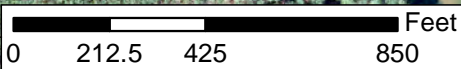
- Spawning Habitat
- Shoreline Tree Felling
- ▲ Nursery Habitat (3 units)
- ◆ Deepwater Fish Attractor (15 units)



Site 1

-81.319198, 34.375601

Path: G:_Client_Data\SCE&G\ParrFairfield_MXD\Reservoir Fluctuation Figures\Monticello Area 1 Enhancements.mxd



Scale:	AS SHOWN	SCE&G COLUMBIA, SC
Project No:	0455097.01	
Filename:	see margin	PARR HYDROELECTRIC PROJECT FERC PROJECT NO. 1894
Drawn By:	JJJ	MONTICELLO RESERVOIR HABITAT ENHANCEMENTS
Date Drawn:	5/31/2016	<i>204 Caughman Farm Ln., Suite 301 Lexington, SC 29072 Telephone: (803) 462-5620 Fax: (803) 462-5619 www.KleinschmidtGroup.com</i>



Legend

- Spawning Habitat
- Shoreline Tree Felling
- ▲ Nursery Habitat (3 units)
- ◆ Deepwater Fish Attractor (15 units)

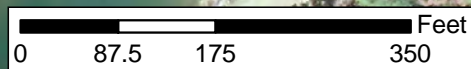
Deepwater enhancements will supplement existing fish attractor.



Site 2

-81.308202, 34.375985

Path: G:_Client_Data\SCE&G\ParrFairfield_MXD\Reservoir Fluctuation Figures\Monticello Area 2 Enhancements.mxd



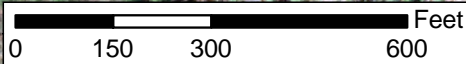
Scale:	AS SHOWN	SCE&G COLUMBIA, SC
Project No:	0455097.01	
Filename:	see margin	PARR HYDROELECTRIC PROJECT FERC PROJECT NO. 1894
Drawn By:	JJJ	MONTICELLO RESERVOIR HABITAT ENHANCEMENTS
Date Drawn:	5/31/2016	<small>204 Coughman Farm Ln., Suite 301 Lexington, SC 29072 Telephone: (803) 462-5620 Fax: (803) 462-5619 www.KleinschmidtGroup.com</small>

Legend

- Spawning Habitat
- Shoreline Tree Felling
- ▲ Nursery Habitat (3 units)
- ◆ Deepwater Fish Attractor (15 units)



Site 3
-81.329417, 34.372015

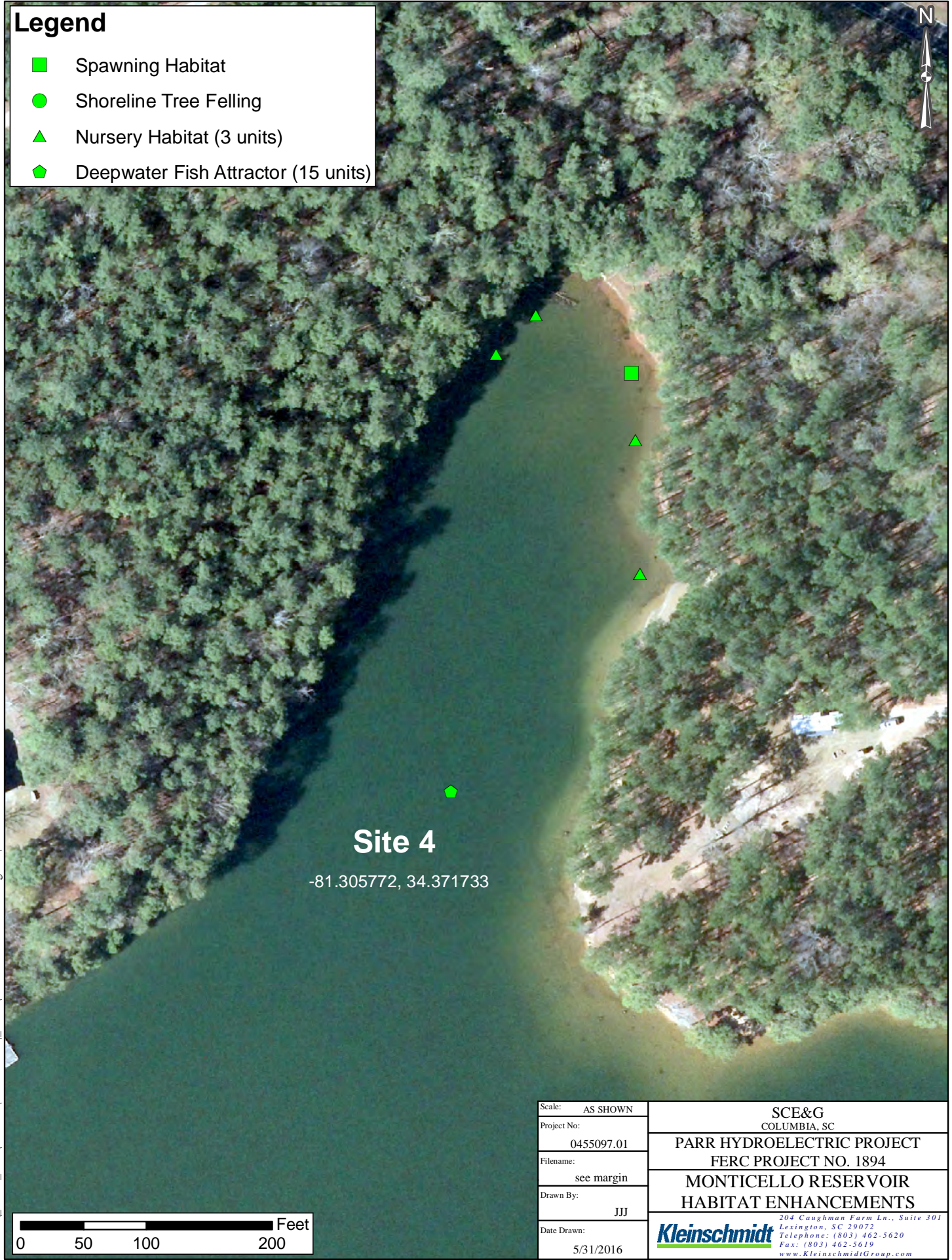


Scale:	AS SHOWN	SCE&G COLUMBIA, SC
Project No:	0455097.01	PARR HYDROELECTRIC PROJECT FERC PROJECT NO. 1894
Filename:	see margin	MONTICELLO RESERVOIR HABITAT ENHANCEMENTS
Drawn By:	JJJ	204 Caughman Farm Ln., Suite 301 Lexington, SC 29072 Telephone: (803) 462-5620 Fax: (803) 462-5619 www.KleinschmidtGroup.com
Date Drawn:	5/31/2016	Kleinschmidt

Path: G:_Client_Data\SCE&G\ParrFairfield_MXD\Reservoir Fluctuation Figures\Monticello Area 3 Enhancements.mxd

Legend

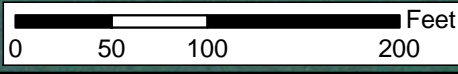
- Spawning Habitat
- Shoreline Tree Felling
- ▲ Nursery Habitat (3 units)
- ◆ Deepwater Fish Attractor (15 units)



Site 4

-81.305772, 34.371733

Path: G:_Client_Data\SCE&G\ParrFairfield_MXD\Reservoir Fluctuation Figures\Monticello Area 4 Enhancements.mxd



Scale:	AS SHOWN	SCE&G COLUMBIA, SC
Project No:	0455097.01	
Filename:	see margin	PARR HYDROELECTRIC PROJECT FERC PROJECT NO. 1894
Drawn By:	JJJ	MONTICELLO RESERVOIR HABITAT ENHANCEMENTS
Date Drawn:	5/31/2016	Kleinschmidt <small>204 Coughman Farm Ln., Suite 301 Lexington, SC 29072 Telephone: (803) 462-5620 Fax: (803) 462-5619 www.KleinschmidtGroup.com</small>

Source: Kleinschmidt, Orbis, SCE&G

Legend

- Spawning Habitat
- Shoreline Tree Felling
- ▲ Nursery Habitat (3 units)
- ◆ Deepwater Fish Attractor (15 units)

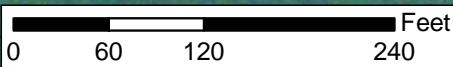


Site 5

-81.327358, 34.36236



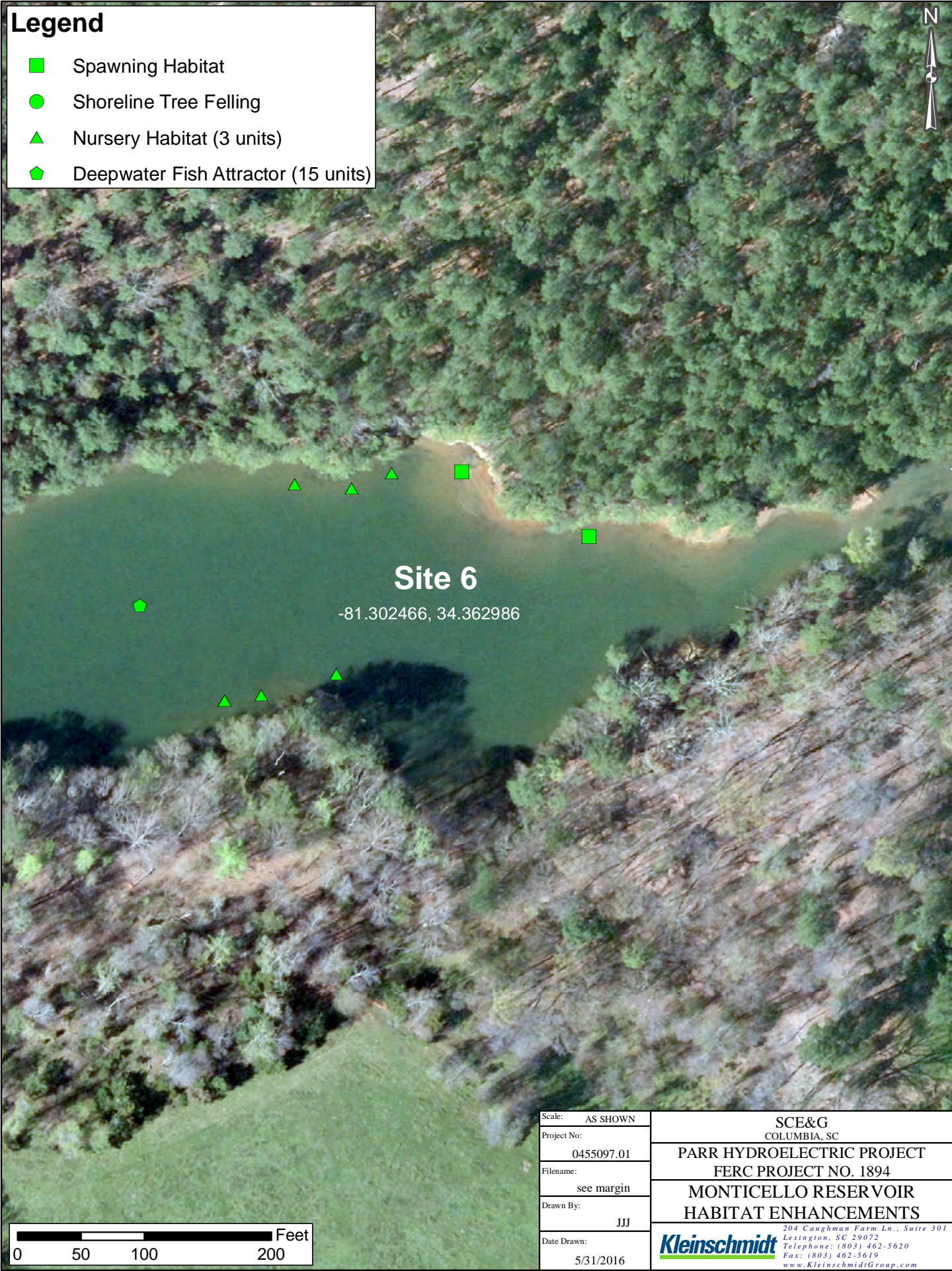
Path: G:_Client_Data\SCE&G\ParrFairfield_MXD\Reservoir Fluctuation Figures\Monticello Area 5 Enhancements.mxd



Scale:	AS SHOWN	SCE&G COLUMBIA, SC
Project No:	0455097.01	
Filename:	see margin	PARR HYDROELECTRIC PROJECT FERC PROJECT NO. 1894
Drawn By:	JJJ	MONTICELLO RESERVOIR HABITAT ENHANCEMENTS
Date Drawn:	5/31/2016	<small>204 Caughman Farm Ln., Suite 301 Lexington, SC 29072 Telephone: (803) 462-5620 Fax: (803) 462-5619 www.KleinschmidtGroup.com </small>

Legend

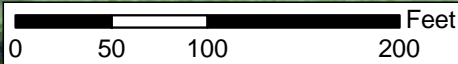
- Spawning Habitat
- Shoreline Tree Felling
- ▲ Nursery Habitat (3 units)
- ◆ Deepwater Fish Attractor (15 units)



Site 6

-81.302466, 34.362986

Path: G:_Client_Data\SCE&G\ParrFairfield_MXD\Reservoir Fluctuation Figures\Monticello Area 6 Enhancements.mxd



Scale:	AS SHOWN	SCE&G COLUMBIA, SC
Project No:	0455097.01	
Filename:	see margin	PARR HYDROELECTRIC PROJECT FERC PROJECT NO. 1894
Drawn By:	JJJ	MONTICELLO RESERVOIR HABITAT ENHANCEMENTS
Date Drawn:	5/31/2016	Kleinschmidt <small>204 Caughman Farm Ln., Suite 301 Lexington, SC 29072 Telephone: (803) 462-5620 Fax: (803) 462-5619 www.KleinschmidtGroup.com</small>

Source: Kleinschmidt, Orbis, SCE&G

Legend

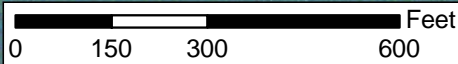
- Spawning Habitat
- Shoreline Tree Felling
- ▲ Nursery Habitat (3 units)
- ◆ Deepwater Fish Attractor (15 units)



Site 7

-81.299807, 34.329525

Path: G:_Client_Data\SCE&G\ParrFairfield_MXD\Reservoir Fluctuation Figures\Monticello Area 7 Enhancements.mxd



Scale:	AS SHOWN	SCE&G COLUMBIA, SC
Project No:	0455097.01	
Filename:	see margin	PARR HYDROELECTRIC PROJECT FERC PROJECT NO. 1894
Drawn By:	JJJ	MONTICELLO RESERVOIR HABITAT ENHANCEMENTS
Date Drawn:	5/31/2016	<small>204 Coughman Farm Ln., Suite 301 Lexington, SC 29072 Telephone: (803) 462-5620 Fax: (803) 462-5619 www.KleinschmidtGroup.com</small>



Legend

- Spawning Habitat
- Shoreline Tree Felling
- ▲ Nursery Habitat (3 units)
- ◆ Deepwater Fish Attractor (15 units)

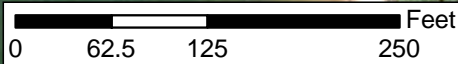
Deepwater enhancements will supplement existing fish attractor.

Site 8

-81.287834, 34.325097



Path: G:_Client_Data\SCE&G\ParrFairfield_MXD\Reservoir Fluctuation Figures\Monticello Area 8 Enhancements.mxd



Scale: AS SHOWN	SCE&G COLUMBIA, SC
Project No: 0455097.01	
Filename: see margin	PARR HYDROELECTRIC PROJECT FERC PROJECT NO. 1894
Drawn By: JJJ	MONTICELLO RESERVOIR HABITAT ENHANCEMENTS
Date Drawn: 5/31/2016	Kleinschmidt <small>204 Caughman Farm Ln., Suite 301 Lexington, SC 29072 Telephone: (803) 462-5620 Fax: (803) 462-5619 www.KleinschmidtGroup.com</small>

Legend

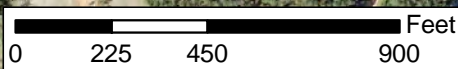
- Spawning Habitat
- Shoreline Tree Felling
- ▲ Nursery Habitat (3 units)
- ◆ Deepwater Fish Attractor(15 units)



Site 9

-81.291424, 34.299092

Path: G:_Client_Data\SCE&G\ParrFairfield_MXD\Reservoir Fluctuation Figures\Monticello Area 9 Enhancements.mxd



Scale:	AS SHOWN	SCE&G COLUMBIA, SC
Project No:	0455097.01	
Filename:	see margin	PARR HYDROELECTRIC PROJECT FERC PROJECT NO. 1894
Drawn By:	JJJ	MONTICELLO RESERVOIR HABITAT ENHANCEMENTS
Date Drawn:	5/31/2016	 <small>204 Caughman Farm Ln., Suite 301 Lexington, SC 29072 Telephone: (803) 462-5620 Fax: (803) 462-5619 www.KleinschmidtGroup.com</small>

Legend

- Spawning Habitat
- Shoreline Tree Felling
- ▲ Nursery Habitat (3 units)
- ◆ Deepwater Fish Attractor (15 units)

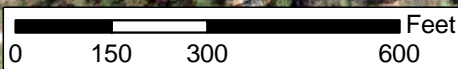


Site 9

Site 10

-81.29618, 34.297807

Path: G:_Client_Data\SCE&G\ParrFairfield_MXD\Reservoir Fluctuation Figures\Monticello Area 10 Enhancements.mxd



Scale:	AS SHOWN	SCE&G COLUMBIA, SC
Project No:	0455097.01	
Filename:	see margin	PARR HYDROELECTRIC PROJECT FERC PROJECT NO. 1894
Drawn By:	JJJ	MONTICELLO RESERVOIR HABITAT ENHANCEMENTS
Date Drawn:	5/31/2016	Kleinschmidt <small>204 Caughman Farm Ln., Suite 301 Lexington, SC 29072 Telephone: (803) 462-5620 Fax: (803) 462-5619 www.KleinschmidtGroup.com</small>

Legend

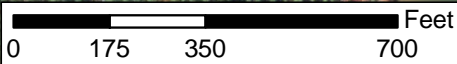
- Spawning Habitat
- Shoreline Tree Felling
- ▲ Nursery Habitat (3 units)
- ◆ Deepwater Fish Attractor (15 units)



Site 11

-81.333266, 34.33655

Path: G:_Client_Data\SCE&G\ParrFairfield_MXD\Reservoir Fluctuation Figures\Monticello Area 11 Enhancements.mxd



Scale:	AS SHOWN
Project No:	0455097.01
Filename:	see margin
Drawn By:	JJJ
Date Drawn:	5/31/2016

SCE&G COLUMBIA, SC
PARR HYDROELECTRIC PROJECT FERC PROJECT NO. 1894
MONTICELLO RESERVOIR HABITAT ENHANCEMENTS
204 Caughman Farm Ln., Suite 301 Lexington, SC 29072 Telephone: (803) 462-5620 Fax: (803) 462-5619 www.KleinschmidtGroup.com



Legend

- Spawning Habitat
- Shoreline Tree Felling
- ▲ Nursery Habitat (3 units)
- ◆ Deepwater Fish Attractor (15 units)

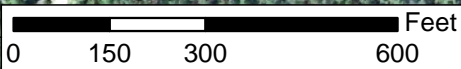
Deepwater enhancements will supplement existing fish attractor.

Site 12

-81.333339, 34.344586

Text

Path: G:_Client_Data\SCE&G\ParrFairfield_MXD\Reservoir Fluctuation Figures\Monticello Area 12 Enhancements.mxd



Scale: AS SHOWN	SCE&G COLUMBIA, SC
Project No: 0455097.01	PARR HYDROELECTRIC PROJECT FERC PROJECT NO. 1894
Filename: see margin	MONTICELLO RESERVOIR HABITAT ENHANCEMENTS
Drawn By: JJJ	204 Caughman Farm Ln., Suite 301 Lexington, SC 29072 Telephone: (803) 462-5620 Fax: (803) 462-5619 www.KleinschmidtGroup.com
Date Drawn: 5/31/2016	Kleinschmidt

Legend

- Spawning Habitat
- Shoreline Tree Felling
- ▲ Nursery Habitat (3 units)
- ◆ Deepwater Fish Attractor (15 units)

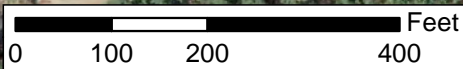


Site 13

-81.28837, 34.313446



Path: G:_Client_Data\SCE&G\ParrFairfield_MXD\Reservoir Fluctuation Figures\Monticello Area 13 Enhancements.mxd



Scale:	AS SHOWN	SCE&G COLUMBIA, SC
Project No:	0455097.01	
Filename:	see margin	PARR HYDROELECTRIC PROJECT FERC PROJECT NO. 1894
Drawn By:	JJJ	MONTICELLO RESERVOIR HABITAT ENHANCEMENTS
Date Drawn:	5/31/2016	Kleinschmidt <small>204 Caughman Farm Ln., Suite 301 Lexington, SC 29072 Telephone: (803) 462-5620 Fax: (803) 462-5619 www.KleinschmidtGroup.com</small>